



2022-2023

SCHOOL CHOICE GUIDE


 **STUDENT ASSIGNMENT AND PROGRAM ACCESS**
SEMINOLE COUNTY PUBLIC SCHOOLS



TABLE OF CONTENTS

Information Expo & Magnet Nights 1

ELEMENTARY SCHOOLS 2

Keys to Making an Informed Choice
Elementary Schools 3

Elementary Region School Zones 4

Region School Zone Checklist:
How Do I Apply? 5

Elementary School Magnets 6-12

Elementary Magnets Checklist:
How Do I Apply? 13

Elementary School Transfer Options 14

Elementary Transfer Checklist:
How Do I Apply? 15

MIDDLE SCHOOLS 16

Keys To Making an Informed Choice
Middle Schools 17

Middle School Magnets 18-24

SCPS Pre-IB Preparatory Program 19-20

Middle School Magnets Checklist:
How Do I Apply? 25

Middle School Transfer Options 26

Middle School Transfer Checklist:
How Do I Apply? 27

HIGH SCHOOLS 28

Keys to Making an Informed Choice
High Schools 29

High School Magnets 30-35

High School Magnets Checklist:
How Do I Apply? 36

High School Transfer Options 37

High School Transfer Checklist:
How Do I Apply? 38

High School Programs of Emphasis 39

2022-2023 Calendar 40

Frequently Asked Questions 41

Online Application 42

General School Zone Information 43

Seminole County Virtual School 44

IMPORTANT DATES

OCTOBER 1 – DECEMBER 1, 2021:
Middle School & High School Magnet Application Period

JANUARY 1 – MARCH 1, 2022:
Elementary School Magnet & Elementary Region School Zone Application Period

FEBRUARY 1 – APRIL 1, 2022:
Transfer Application Period

APRIL 1 – MAY 1, 2022:
Controlled Open Enrollment Application Period

VISIT

www.seminoleschoolchoicesapplication.us
TO APPLY

A NOTE FROM THE SUPERINTENDENT

“As a premiere national school district, SCPS takes tremendous pride in providing a variety of opportunities for our students to thrive. The Student Assignment and Program Access Department implements that mission by connecting students with personalized learning opportunities that not only help them discover their passion, but also allows them an opportunity to explore their own unique and tailor-made educational pathway. Our goal is to provide every student with a world-class education that will ultimately set them up for a future full of success and help them achieve any dream they wish to pursue.”



Serita Beamon,
Superintendent
Seminole County Public Schools



EXPLORE UNIQUE PROGRAMS

K-12 SCHOOL CHOICE EXPO	OCTOBER 23, 2021	11:00 AM TO 2:00 PM	SEMINOLE TOWNE CENTER BURLINGTON COURT/CENTER COURT 200 Towne Center Circle Sanford, FL 32771
--------------------------------	-------------------------	----------------------------	--

ELEMENTARY SCHOOL MAGNET NIGHTS

Goldsboro Elementary Math, Science, & Technology Magnet School	Tuesday, February 8, 2022	6:00 PM
Hamilton Elementary School of Engineering & Technology	Tuesday, February 1, 2022	6:30 PM
Idyllwilde Elementary Future Ready Academy	Thursday, February 3, 2022	6:00 PM
Midway Elementary School of the Arts	Wednesday, January 26, 2022	6:00 PM
Pine Crest Elementary Magnet School of Innovation	Thursday, January 27, 2022	6:00 PM
Wicklów Elementary Magnet School for Global Pathways	Tuesday, January 25, 2022	6:30 PM

MIDDLE SCHOOL MAGNET NIGHTS

Millennium Middle School Fine Arts & Communication Magnet	Tuesday, October 26, 2021	6:30 PM
Milwee Middle School Pre-Engineering Magnet	Thursday, November 11, 2021	6:30 PM
Sanford Middle School Math, Science, & Technology Magnet	Tuesday, November 9, 2021	6:00 PM
South Seminole Academy of Leadership, Law, & Advanced Studies	Tuesday, November 2, 2021	6:00 PM

HIGH SCHOOL MAGNET NIGHTS

Academy of Health Careers at Seminole High School	Tuesday, November 16, 2021	6:00 PM
Academy of Engineering at Lyman High School	Thursday, November 4, 2021	6:00 PM
Crooms Academy of Information Technology	Wednesday, November 3, 2021	6:00 PM
IB Diploma Program at Seminole High School	Wednesday, November 10, 2021	6:00 PM
IB Diploma Program at Winter Springs High School	Thursday, October 14, 2021	6:00 PM

FOR SCHOOL TOURS, PLEASE CONTACT THE INDIVIDUAL SCHOOL.

Elementary School Magnet contact information page 6.

Middle School Magnet contact information page 18.

High School Magnet contact information page 30.



ELEMENTARY SCHOOLS (GRADES K-5)

Student Assignment Processes and School Choice Options

Seminole County Public Schools manages a wide variety of student assignment and school choice transfer options in an effort to accommodate family choice to the maximum extent possible while also seeking to minimize overcrowded conditions, promote and maintain diverse student enrollment, support the implementation of ePathways initiatives to the maximum extent possible, and maintain compliance with any state mandates. These processes and options are outlined over the next several pages.



SCHOOL RESEARCH CHECKLIST:

Keys to making an **INFORMED CHOICE**

- Visit school websites
(www.scps.k12.fl.us/schools/school-listings)
- Attend a school choice event
- Contact the school
- Take a tour of the school

Quick Facts About the School:

School Name: _____

Phone Number: _____

School Hours: _____ Office Hours: _____

Transportation Available: _____ School Size: _____ Class Size: _____

Parent Teacher Association (PTA): _____ Student Advisory Council (SAC): _____

Other Volunteer Opportunities: _____

School Tour Observation Checklist:

- The classrooms look cheerful and students seem happy and engaged.
- Student work is displayed and it seems appropriate for the grade level.
- Teachers seem enthusiastic and knowledgeable.
- The principal seems confident and interested in interacting with students, teachers, and parents.
- There is a playground, gym, field space, or athletic facility.
- There are unique, fun, and interesting learning spaces besides just regular classrooms.
- Facilities are well-maintained and the grounds are secure but inviting.

Key Questions to Ask:

- Does this school have a particular educational philosophy, mission, or theme?
- How does the school keep parents informed of school information and activities?
- How is technology used to support teaching and learning at this school?
- What extracurricular opportunities (sports, clubs, community services, competitions) are available for students?
- Does the school have a program for gifted students?
- How does this school support students who have academic, social, or emotional difficulties?
- What professional development opportunities do teachers have?
- Does the school offer physical education, art, and music classes?
- Does the school make an effort to provide activities that create a sense of community?
- What are some of the school's greatest accomplishments?

Questions for Elementary Schools:

- Is quality child care available before and after school?
- How much outdoor time do kids get each day?



JANUARY 1 – MARCH 1, 2022

On Time Application Period

ELEMENTARY REGION SCHOOL ZONES

Students residing in Region 1, Region 2, or Region 3 are assigned to any one of the three schools by the Student Assignment & Program Access Department. Families must receive a school assignment from the Student Assignment & Program Access Department before they can enroll at a school.

- Parents/Guardians residing in an elementary region school zone will designate by rank order their preference for their student among the schools located within the region.
- Student assignment will be based upon the following criteria – preference zone, full time site-based employee, sibling placement, socioeconomic diversity, family preference, and capacity.
- Transportation is provided to all students who live more than 2 miles from their assigned school.

There is a sibling link for students to attend the same school that his/her sibling currently attends and will continue to attend. The new student is required to submit an application during the on time application period. Current students do not need to re-apply.

REGION 1

Bentley Elementary

Idyllwilde Elementary
Future Ready Academy

Wilson Elementary

REGION 2

Bentley Elementary

Crystal Lake Elementary

Wicklow Elementary
*Magnet School for
Global Pathways*

REGION 3

Hamilton Elementary
*School of Engineering
& Technology*

Midway Elementary
School of the Arts

Pine Crest Elementary
Magnet School of Innovation



How to Apply for an **ELEMENTARY REGION SCHOOL ZONE**

STEP

1

COMPLETE THE APPROPRIATE REGION SCHOOL ZONE APPLICATION BASED UPON YOUR ADDRESS.

- Apply online at www.seminoleschoolchoicesapplication.us

STEP

2

SUBMIT THE REGION SCHOOL APPLICATION VIA THE ONLINE APPLICATION SYSTEM.

- Confirmation email will be sent upon submission.
- If you do not receive a confirmation email, you did not submit the application.

STEP

3

RECEIVE A SCHOOL ASSIGNMENT EMAIL.

- On time lottery applications = school assignment email sent in late March/early April each year.
- Late/ongoing applications = school assignment email sent within 24-48 hours.
- Even if assigned to your second or third choice school, a family must register at the assigned school in order to remain in the wait pool for their first choice school.
- Student assignment will be based upon the following criteria — preference zone, full time site-based employee, sibling placement, socioeconomic diversity, family preference, and capacity.

STEP

4

REVIEW THE SCHOOL ASSIGNMENT EMAIL AND COMPLETE THE APPROPRIATE STEPS FOR ENROLLMENT.

- The school is responsible for checking all required enrollment documentation and verifying residency.
- All school assignments have an enrollment deadline.
- If the parents/guardians do not enroll their child by the stated deadline, they will be required to submit a new region school application.

JANUARY 1 – MARCH 1, 2022

On Time Application Period

There is a sibling link for students to attend the same school that his/her sibling currently attends and will continue to attend. The new student is required to submit an application during the application period. Current students do not need to re-apply.



ELEMENTARY SCHOOL MAGNETS

- Magnet Schools & Magnet Programs are high-quality and innovative educational programs that specialize in a particular theme and are open to all Seminole County students.
- Transportation is provided to all students who live more than 2 miles from the school/program.
- Program Links are available from specified elementary schools to specified middle schools per School Board Policy 5120. Applications must be submitted during the on time application period in order for the specified link to be applied.



GOLDSBORO ELEMENTARY Math, Science, & Technology Magnet School

1300 West 20th St. • Sanford, FL
407.320.5850
www.goldsboro.scps.k12.fl.us

[PROGRAM LINK TO SANFORD
MIDDLE SCHOOL](#)



HAMILTON ELEMENTARY School of Engineering & Technology

1501 East 8th St. • Sanford, FL
407.320.6050
www.hamilton.scps.k12.fl.us

[PROGRAM LINK TO MILWEE
MIDDLE SCHOOL](#)



IDYLLWILDE ELEMENTARY Future Ready Academy

430 Vihlen Rd. • Sanford, FL
407.320.3750
www.idyllwilde.scps.k12.fl.us



MIDWAY ELEMENTARY School of the Arts

2368 Brisson Ave. • Sanford, FL
407.320.5950
www.midway.scps.k12.fl.us

[PROGRAM LINK TO MILLENNIUM
MIDDLE SCHOOL](#)



PINE CREST ELEMENTARY Magnet School of Innovation

405 West 27th St. • Sanford, FL
407.320.5450
www.pinecrest.scps.k12.fl.us



WICKLOW ELEMENTARY Magnet School for Global Pathways

100 Placid Lake Dr. • Sanford, FL
407.320.1250
www.wicklow.scps.k12.fl.us

THE UNIVERSE IS WAITING!



**GOLDSBORO
ELEMENTARY**
Magnet School's academic
program is driven by
problem-solving, discovery,
and exploratory learning
through integrated
STEM experiences.



Students engage in real-world experiences within our unique lab spaces including The Kids Space Center, Bio-Science Lab, Robotics and Computer Coding Lab, Mathematics Lab, Virtual Reality Lab, and Maker Space to stretch their imagination and work collaboratively to solve problems through Science, Technology, Engineering, and Mathematics.

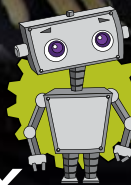
ENGINEERING THE FUTURE TODAY



OUR STUDENTS
ENGAGE IN HANDS-
ON, PROJECT-BASED
STEM CHALLENGES IN
ORDER TO BUILD CORE
KNOWLEDGE AND
DEVELOP FUTURE-
READY SKILLS.

SCHOOL OF ENGINEERING AND TECHNOLOGY

HAMILTON
ELEMENTARY



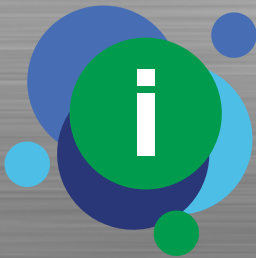
Engineering and technology are integrated into language arts, mathematics, and science standards through engineering design units created exclusively for Hamilton Elementary students.

Program incorporates Engineering is Elementary and Lego Robotics into the K-5 academic experience.

Students engineer real-world designs including playgrounds, planetary rovers, rollercoasters, racecars, windmills, 3D printed prototypes, light mazes, weather gadgets, zip lines, and more.



1501 East 8th Street | Sanford, FL 32771 | 407-320-6050 | www.hamilton.scps.k12.fl.us



**IDYLLWILDE
ELEMENTARY**
Future Ready Academy

IGNITING INQUIRY, INSPIRING LEADERS.



Idyllwilde Elementary Future Ready Academy is authorized to offer the prestigious **INTERNATIONAL BACCALAUREATE PRIMARY YEARS PROGRAMME**.

The IB PYP challenges students to think for themselves and take responsibility for their learning as they **EXPLORE** and **SEEK SOLUTIONS** to **LOCAL AND GLOBAL ISSUES**.

Our **WORLD-CLASS MAGNET PROGRAM** gives students the opportunity to receive **INQUIRY DRIVEN INSTRUCTION** and leadership skills through Franklin Covey's Leader in Me model to create a **CULTURE OF STUDENT EMPOWERMENT**.



430 Vihlen Road | Sanford, FL 32771 | 407-320-3750 | www.idyllwilde.scps.k12.fl.us

APPLY AT WWW.SEMINOLESCHOOLCHOICESAPPLICATION.US



Where Excellence Takes Center Stage.



Midway is the only Artful Learning School in the state of Florida and 1 of only 17 in the country.

ARTFUL LEARNING infuses arts into all academic areas and builds creativity in the learning process.



Students become performers and explore careers through unique studios specializing in dance, instrumental band, vocal music, orchestra, visual art, and computer science/coding.

The Annual Broadway show allows students to experience all facets of theatre in a full-scale setting: stage presence, acting, singing, dancing, lighting, set design, and audio/visual.

2368 Brisson Avenue | Sanford, FL 32771 | 407-320-5950 | www.midway.scps.k12.fl.us

10 APPLY AT WWW.SEMINOLESCHOOLCHOICESAPPLICATION.US



**Pine Crest
Elementary**
School of Innovation

SHAPING THE FUTURE THROUGH INNOVATION...

Students at Pine Crest Elementary Magnet School of Innovation:



IMAGINE

by harnessing the power of teamwork and a design thinking framework to effectively explore new ideas.



CREATE

by leveraging technology and collaboratively engaging in problem solving to generate concepts and bring solutions to life.



CONNECT

with others in our school, our local community, across the state, and/or on a national scale via self-directed learning projects to solve student-identified issues.



Students experience Computer Science immersion, which lays the foundation for pursuing high demand jobs of tomorrow.

Phab Lab combines Computer Science and problem-solving opportunities, which transitions students from just players into creators.

Innovative school campus beams with state-of-the-art collaborative spaces and technology.



405 West 27th Street | Sanford, FL 32773 | 407-320-5450 | www.pinecrest.scps.k12.fl.us

APPLY AT WWW.SEMINOLESCHOOLCHOICESAPPLICATION.US



EXPLORE WICKLOW, EXPLORE THE WORLD.



Wicklow Elementary Magnet School for Global Pathways is an authorized IB World School and students have the opportunity to learn a second language through our Dual Language Immersion Program or by studying Spanish/French in our World Language Program.



The ONLY SCPS elementary school that offers 2 world languages (French and Spanish).

Become a globally-minded citizen equipped with the strategies, knowledge, and skills needed to pursue excellence in our modern society.

Investigate and connect firsthand with cultures of the world through language immersion, partnerships, and state-of-the-art technology.

Learn to listen, speak, read, and write in two languages; achieve academic excellence through an international approach; and develop cultural awareness and sensitivity.

100 Placid Lake Drive | Sanford, FL 32773 | 407.320.1250 | www.wicklow.scps.k12.fl.us



For families residing in elementary region school zones, magnet placement will trump region school zone placement and result in region school zone applications being withdrawn.

How to Apply for an **ELEMENTARY SCHOOL MAGNET**

STEP

1

DETERMINE IF YOUR CHILD IS ELIGIBLE TO APPLY FOR A MAGNET SCHOOL.

- If your family is zoned to an elementary region school zone (Region 1, Region 2, Region 3), you would access the magnet schools *in your school zone via the elementary region school zone application.*
- If your family is zoned to an elementary region school zone, you would access the magnet schools **outside of your school zone via the elementary magnet application (proceed to next step).**
- For families residing in elementary region school zones, magnet placement will trump region school zone placement and result in region school zone applications being withdrawn.
- All Seminole County families living in single school zones (i.e. - Lake Mary, Heathrow, Wekiva, Stenstrom, etc.) would access the magnet schools **via the elementary magnet application (proceed to next step).**

STEP

2

COMPLETE THE APPROPRIATE MAGNET SCHOOL APPLICATION.

- Apply online at www.seminoleschoolchoicesapplication.us.
- Students may only apply to one magnet program.

STEP

3

SUBMIT THE MAGNET SCHOOL APPLICATION VIA THE ONLINE APPLICATION SYSTEM.

- Confirmation email will be sent upon submission.
- If you do not receive a confirmation email, you did not submit the application.

STEP

4

RECEIVE A MAGNET SCHOOL NOTIFICATION EMAIL.

- On time lottery applications = school assignment email sent in late March/early April each year.
- Based upon limited seat availability, even some on time applicants may receive a wait list email.
- Late applications = will be placed on the wait list for that specific program.

STEP

5

ACCEPT YOUR CHILD'S MAGNET SCHOOL ASSIGNMENT OR WAIT LIST SEAT VIA THE ONLINE APPLICATION SYSTEM.

- Log into your parent/guardian account at www.seminoleschoolchoicesapplication.us.
- Find the "magnet school applications" tab in the middle of the screen and accept your child's seat placement.

STEP

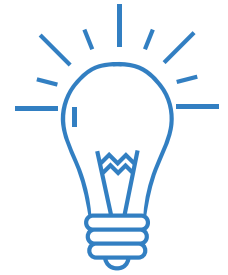
6

IF ACCEPTED INTO A MAGNET SCHOOL, FAMILIES MUST COMPLETE THE APPROPRIATE STEPS FOR ENROLLMENT.

- The school is responsible for checking all required enrollment documentation and verifying residency.
- All magnet school acceptance notifications have an enrollment deadline.
- If the parents/guardians do not enroll their child by the stated deadline, they will be required to submit a new magnet school application and their child will be placed on the wait list.



ELEMENTARY SCHOOL TRANSFER OPTIONS



SCPS EMPLOYEE STUDENT TRANSFER

- School choice option permitted under School Board Policy 5120 allows Seminole County Public School employees to bring their children to the site at which they work or to transfer their children to a specifically designated employee transfer school.
- Transportation is not provided.

CAPACITY TRANSFER

- School choice option permitted under School Board Policy 5120 allows students to transfer between designated Over-Capacity schools and designated Under-Capacity schools.
- Transportation is not provided.
- All available options are published annually.

DIVERSITY TRANSFER

- School choice option permitted under School Board Policy 5120 allows student transfers that bring schools closer to the average percentage of students approved for free/reduced price meal benefits at the elementary, middle, and high school levels.
- Transportation is provided to a designated school. Other school choices are without transportation.
- All available options are published annually.

ANNUALLY DEFINED TRANSFERS

- School choice options permitted under School Board Policy 5120 are designed to offer one year educational choice options for families in unique circumstances in an effort to provide educational consistency for students and families.
- Transportation is not generally provided for these options.
- Academic Year Completion Transfer
- Pending Move Transfer
- Rising 5th Grade Student Transfer
- Sibling of Exceptional Education Student Transfer

CONTROLLED OPEN ENROLLMENT

- School choice option permitted under School Board Policy 5121 allows students the opportunity to apply to a specifically designated controlled open enrollment Seminole County Public School outside their geographic attendance zone.
- Transportation is not provided.
- All available options are published annually.

MCKAY SCHOLARSHIP

- Parent/Guardian must file an intent for a McKay Scholarship on the Florida Department of Education (DOE) website at www.floridaschoolchoice.org to determine eligibility.
- If a parent/guardian elects to use the McKay Scholarship for a public school choice option the Exceptional Student Support Services Department will ensure IEP requirements and class size restrictions are reviewed.

MAXIMIZATION TRANSFER

- School choice option permitted under School Board Policy 5120 allows students to transfer between designated Under-Capacity schools and designated greater Under-Capacity schools in order to make the most efficient use of available space and maximize school choice options for families.
- Transportation is not provided.
- All available options are published annually.



How to Apply for an **ELEMENTARY SCHOOL TRANSFER OPTION**



STEP

1

DETERMINE IF YOUR CHILD QUALIFIES FOR A PUBLISHED, ALLOWABLE TRANSFER OPTION.

- Review the Capacity, Diversity, & Maximization Chart published in February.
- Review the SCPS Employee Student Transfer Information Item published in February.
- Review the Controlled Open Enrollment Information Item published in April.

STEP

2

COMPLETE THE APPROPRIATE TRANSFER APPLICATION.

- Apply online at www.seminoleschoolchoicesapplication.us.
- Select from the menu of allowable options for your student.
- Students may only apply for one transfer option.

STEP

3

SUBMIT THE TRANSFER APPLICATION VIA THE ONLINE APPLICATION SYSTEM.

- Confirmation email will be sent upon submission.
- If you do not receive a confirmation email, you did not submit the application.
- Please check the Student Assignment & Program Access Department website for specific application timelines.

STEP

4

RECEIVE A TRANSFER REQUEST NOTIFICATION EMAIL.

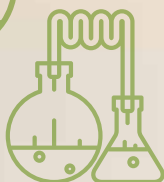
- This email notification will inform parents/guardians if the request was approved or denied.
- If request is denied there will be a reason for the denial in the email notification.

STEP

5

IF A TRANSFER REQUEST IS APPROVED, FAMILIES MUST COMPLETE THE APPROPRIATE STEPS FOR ENROLLMENT.

- The school is responsible for checking all required enrollment documentation and verifying residency.
- All approved transfer notifications have an enrollment deadline.
- If the parents/guardians do not enroll their child by the stated deadline, they will be required to submit a new transfer application.



MIDDLE SCHOOLS (GRADES 6-8)

Student Assignment Processes and School Choice Options

Seminole County Public Schools manages a wide variety of student assignment and school choice transfer options in an effort to accommodate family choice to the maximum extent possible while also seeking to minimize overcrowded conditions, promote and maintain diverse student enrollment, support the implementation of ePathways initiatives to the maximum extent possible, and maintain compliance with any state mandates. These processes and options are outlined over the next several pages.



Keys to making an **INFORMED CHOICE**

- Visit school websites
(www.scps.k12.fl.us/schools/school-listings)
- Attend a school choice event
- Contact the school
- Take a tour of the school

Quick Facts About the School:

School Name: _____

Phone Number: _____

School Hours: _____ Office Hours: _____

Transportation Available: _____ School Size: _____ Class Size: _____

Parent Teacher Association (PTA): _____ Student Advisory Council (SAC): _____

Other Volunteer Opportunities: _____

School Tour Observation Checklist:

- The classrooms look cheerful and students seem happy and engaged.
- Student work is displayed and it seems appropriate for the grade level.
- Teachers seem enthusiastic and knowledgeable.
- The principal seems confident and interested in interacting with students, teachers, and parents.
- There is a gym, field space, or athletic facility.
- There are unique, fun, and interesting learning spaces besides just regular classrooms.
- Facilities are well-maintained and the grounds are secure but inviting.

Key Questions to Ask:

- Does this school have a particular educational philosophy, mission, or theme?
- How does the school keep parents informed of school information and activities?
- How is technology used to support teaching and learning at this school?
- What extracurricular opportunities (sports, clubs, community services, competitions) are available for students?
- Does the school have a program for gifted students?
- How does this school support students who have academic, social, or emotional difficulties?
- What professional development opportunities do teachers have?
- Does the school offer physical education, art, and music classes?
- Does the school make an effort to provide activities that create a sense of community?
- What are some of the school's greatest accomplishments?

Questions for Middle Schools:

- How does the school prepare students for major academic decisions that will define their options in high school and beyond?
- Are world languages classes (French, Spanish, etc.) offered to students?

OCTOBER 1 – DECEMBER 1, 2021

On Time Application Period

There is a sibling link for students to attend the same school that his/her sibling currently attends and will continue to attend. The new student is required to submit an application during the application period. Current students do not need to re-apply.



MIDDLE SCHOOL MAGNETS

- Magnet Schools & Magnet Programs are high-quality and innovative educational programs that specialize in a particular theme and are open to all Seminole County students.
- Transportation is provided to all students who live more than 2 miles from the school/program.
- Program Links are available from specified middle schools to specified high schools per School Board Policy 5120. Applications must be submitted during the on time application period in order for the specified link to be applied.



MILLENNIUM MIDDLE SCHOOL Fine Arts and Communication Magnet

Offering SCPS Pre-IB Preparatory Program
2330 East SR 46 • Sanford, FL
407-320-6550
www.millennium.scps.k12.fl.us



SANFORD MIDDLE SCHOOL Math, Science, and Technology Magnet

Offering SCPS Pre-IB Preparatory Program
1700 South French Ave. • Sanford, FL
407-320-6150
www.sanford.scps.k12.fl.us



MILWEE MIDDLE SCHOOL Pre-Engineering Magnet

Offering SCPS Pre-IB Preparatory Program
1341 South Ronald Reagan Blvd. • Longwood, FL
407-746-3850
www.milwee.scps.k12.fl.us
[PROGRAM LINK TO THE ACADEMY OF
ENGINEERING AT LYMAN HIGH SCHOOL](#)



SOUTH SEMINOLE ACADEMY Leadership, Law, & Advanced Studies

Offering SCPS Pre-IB Preparatory Program
101 South Winter Park Dr. • Casselberry, FL
407-746-1350
www.ssa.scps.k12.fl.us



SCPS PRE-IB PREPARATORY PROGRAM*

PREPARATION FOR THE HIGH SCHOOL INTERNATIONAL BACCALAUREATE PROGRAM

The SCPS Pre-IB Preparatory Program offers an extensive course of study in math, science, world language, social studies, and language arts with an emphasis on independent study, in-depth learning, and accelerated curriculum requirements. The program moves at a vigorous pace while integrating creativity, problem-solving, higher-order thinking skills, communication, leadership, planning, goal-setting, and research methods. Students who participate in this program are also required to take a world language and participate in community service projects.

Students zoned to the four middle school magnets (based upon their address) may elect to participate in the SCPS Pre-IB Preparatory Program when completing their middle school course selection forms with guidance counselors in the spring.

Out of zone students interested in participating in the SCPS Pre-IB Preparatory Program need to make sure they complete the correct magnet application by applying for their magnet school of choice + SCPS Pre-IB Program Track.



**Seminole County Public Schools Pre-IB Preparatory Program was designed by and for Seminole County Public Schools and is not affiliated with the International Baccalaureate Organization.*



SCPS PRE-IB PREPARATORY PROGRAM

All four middle school magnets offer students the opportunity to participate in the SCPS Pre-IB Preparatory Program via the SCPS Pre-IB Program Track.



MILLENNIUM MIDDLE SCHOOL

Fine Arts and Communication Magnet

Offering SCPS Pre-IB Preparatory Program



MILWEE MIDDLE SCHOOL

Pre-Engineering Magnet

Offering SCPS Pre-IB Preparatory Program



SANFORD MIDDLE SCHOOL

Math, Science, and Technology Magnet

Offering SCPS Pre-IB Preparatory Program



SOUTH SEMINOLE ACADEMY

Leadership, Law, & Advanced Studies

Offering SCPS Pre-IB Preparatory Program

Students who finish 8th grade in the SCPS Pre-IB Program Track at any of the four middle school magnets and apply during the on time application period for the International Baccalaureate Diploma Program at Seminole High School or Winter Springs High School (eligibility determined by zoned high school) will have a priority for placement.

In-zone students may select the SCPS Pre-IB Preparatory Program on their middle school course registration forms completed with guidance counselors in the spring.

Out-of-zone applicants must make sure they complete the correct magnet application by applying for their magnet school of choice + SCPS Pre-IB Program Track.



Setting the Stage for Future Success



From musical theater to ballet, puppetry to French, TV broadcasting to web design, Millennium Middle School Fine Arts & Communication Magnet School offers unique opportunities to explore, discover, and unleash individual potential.



Millennium is the ONLY Seminole County middle school specially designed as a visual and performing arts magnet, incorporating arts into core curriculum which helps improve academic performance and enhances inquiry, critical thinking, and problem solving skills.





Milwee Middle School
Pre-Engineering Magnet

Engineering Your Future

We provide our students with an array of extracurricular opportunities and unique field trips to broaden their knowledge of engineering.

We are **ENGINEERING YOUR FUTURE** at Milwee Middle School by providing an innovative, pre-engineering curriculum that challenges **ALL** students.

Milwee is the ONLY SCPS middle school to offer Project Lead the Way (PLTW) which engages students in hands-on, collaborative problem solving focused on real-world challenges.

1341 South Ronald Reagan Boulevard | Longwood, FL 32750 | 407-746-3850 | www.milwee.scps.k12.fl.us



Where Exploration Leads to Innovation

At Sanford Middle School Math, Science, & Technology Magnet we aim to develop students to be well-rounded in **academics** and **extracurricular activities**.

Students work in a safe and **supportive learning environment** and are able to **explore** a variety of courses in **STEM fields** such as:

Pre-Medical, Gaming, Pre-Veterinarian, Herpetology, Physics, Aeronautics, Web Development, Biotechnology, Engineering Design, Robotics, Marine Biology, Public Relations & Branding, and many more!

Partnerships with the **Central Florida Zoo** and **local businesses** allow students the opportunity for **field studies** in a real world environment with **job shadowing and mentoring** in chosen career fields.



1700 South French Avenue | Sanford, FL 32771 | 407-320-6150 | www.sanford.scps.k12.fl.us

APPLY AT WWW.SEMINOLESCHOOLCHOICESAPPLICATION.US



SOUTH SEMINOLE
ACADEMY
OF
LEADERSHIP, LAW & ADVANCED STUDIES



UNLEASH YOUR **GIFTS AND TALENTS**

South Seminole Academy is the first middle school in the world to have been honored as a Franklin Covey Leader In Me Lighthouse School, demonstrating a leadership model of excellence emulated by schools locally, nationally, and internationally.

Advanced learning opportunities include the Seminole County Public Schools Pre-IB Prep Program, multiple world languages, Gifted instruction, and high school credit opportunities.

Three year sequence of law studies, mock trials, field trips to government agencies, and guest speakers from the legal community provide students with unique opportunities to explore career pathways in law.

Over 35 Leadership Academies which provide students with voice and choice to explore and develop their talents.



101 South Winter Park Drive | Casselberry, FL | 407-746-1350 | www.ssa.scps.k12.fl.us



How to Apply for a **MIDDLE SCHOOL MAGNET**

STEP

1

DETERMINE IF YOUR CHILD IS ELIGIBLE TO APPLY FOR A MAGNET SCHOOL.

- If your family is zoned to attend a middle school magnet, based upon your address, you do not need to apply for that school.
- If your family is not zoned to attend the middle school magnet of your choice, proceed to the next step.

STEP

2

COMPLETE THE APPROPRIATE MAGNET SCHOOL APPLICATION.

- Apply online at www.seminoleschoolchoicesapplication.us.
- Please note which application you are completing (regular magnet or magnet + SCPS Pre-IB Program Track).
- Magnet + SCPS Pre-IB Program Track = magnet themed electives at the requested school PLUS advanced curriculum in core academic courses (math, language arts, science, social studies, and world language).
- Students may only apply to one magnet program.

STEP

3

SUBMIT THE MAGNET SCHOOL APPLICATION VIA THE ONLINE APPLICATION SYSTEM.

- Confirmation email will be sent upon submission.
- If you do not receive a confirmation email, you did not submit the application.

STEP

4

RECEIVE A MAGNET SCHOOL NOTIFICATION EMAIL.

- On time lottery applications = school assignment email sent in mid-January each year.
- Based upon limited seat availability, even some on time applicants may receive a wait list email.
- Late applications = will be placed on the wait list for that specific program.

STEP

5

ACCEPT YOUR CHILD'S MAGNET SCHOOL ASSIGNMENT OR WAIT LIST SEAT VIA THE ONLINE APPLICATION SYSTEM.

- Log into your parent/guardian account at www.seminoleschoolchoicesapplication.us.
- Find the "magnet school applications" tab in the middle of the screen and accept your child's seat placement.

STEP

6

IF ACCEPTED INTO A MAGNET SCHOOL, FAMILIES MUST COMPLETE THE APPROPRIATE STEPS FOR ENROLLMENT.

- The school is responsible for checking all required enrollment documentation and verifying residency.
- All magnet school acceptance notifications have an enrollment deadline.
- If the parents/guardians do not enroll their child by the stated deadline, they will be required to submit a new magnet school application and their child will be placed on the wait list.



MIDDLE SCHOOL TRANSFER OPTIONS

SCPS EMPLOYEE STUDENT TRANSFER

- School choice option permitted under School Board Policy 5120 allows Seminole County Public School employees to bring their children to the site at which they work or to transfer their children to a specifically designated employee transfer school.
- Transportation is not provided.

CAPACITY TRANSFER

- School choice option permitted under School Board Policy 5120 allows students to transfer between designated Over-Capacity schools and designated Under-Capacity schools.
- Transportation is not provided.
- All available options are published annually.

DIVERSITY TRANSFER

- School choice option permitted under School Board Policy 5120 allows student transfers that bring schools closer to the average percentage of students approved for free/reduced price meal benefits at the elementary, middle, and high school levels.
- Transportation is provided to a designated school. Other school choices are without transportation.
- All available options are published annually.

ANNUALLY DEFINED TRANSFERS

- School choice options permitted under School Board Policy 5120 are designed to offer one year educational choice options for families in unique circumstances in an effort to provide educational consistency for students and families.
- Transportation is not generally provided for these options.
- Academic Year Completion Transfer
- Pending Move Transfer
- Rising 8th Grade Student Transfer
- Sibling of Exceptional Education Student Transfer

CONTROLLED OPEN ENROLLMENT

- School choice option permitted under School Board Policy 5121 allows students the opportunity to apply to a specifically designated controlled open enrollment Seminole County Public School outside their geographic attendance zone.
- Transportation is not provided.
- All available options are published annually.

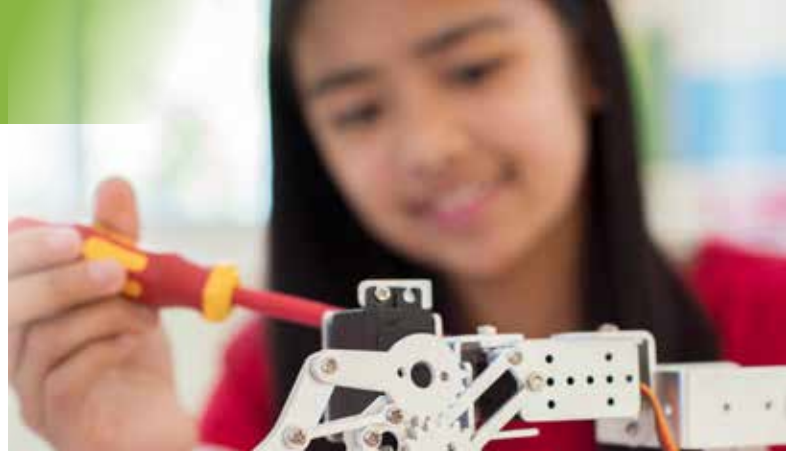
MCKAY SCHOLARSHIP

- Parent/Guardian must file an intent for a McKay Scholarship on the Florida Department of Education (DOE) website at www.floridaschoolchoice.org to determine eligibility.
- If a parent/guardian elects to use the McKay Scholarship for a public school choice option the Exceptional Student Support Services Department will ensure IEP requirements and class size restrictions are reviewed.

MAXIMIZATION TRANSFER

- School choice option permitted under School Board Policy 5120 allows students to transfer between designated Under-Capacity schools and designated greater Under-Capacity schools in order to make the most efficient use of available space and maximize school choice options for families.
- Transportation is not provided.
- All available options are published annually.

How to Apply for a **MIDDLE SCHOOL TRANSFER OPTION**



STEP

1

DETERMINE IF YOUR CHILD QUALIFIES FOR A PUBLISHED, ALLOWABLE TRANSFER OPTION.

- Review the Capacity, Diversity, & Maximization Chart published in February.
- Review the SCPS Employee Student Transfer Information Item published in February.
- Review the Controlled Open Enrollment Information Item published in April.

STEP

2

COMPLETE THE APPROPRIATE TRANSFER APPLICATION.

- Apply online at www.seminoleschoolchoicesapplication.us.
- Select from the menu of allowable options for your student.
- Students may only apply for one transfer option.

STEP

3

SUBMIT THE TRANSFER APPLICATION VIA THE ONLINE APPLICATION SYSTEM.

- Confirmation email will be sent upon submission.
- If you do not receive a confirmation email, you did not submit the application.
- Please check the Student Assignment & Program Access Department website for specific application timelines.

STEP

4

RECEIVE A TRANSFER REQUEST NOTIFICATION EMAIL.

- This email notification will inform parents/guardians if the request was approved or denied.
- If request is denied there will be a reason for the denial in the email notification.

STEP

5

IF A TRANSFER REQUEST IS APPROVED, FAMILIES MUST COMPLETE THE APPROPRIATE STEPS FOR ENROLLMENT.

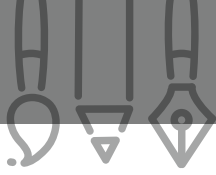
- The school is responsible for checking all required enrollment documentation and verifying residency.
- All approved transfer notifications have an enrollment deadline.
- If the parents/guardians do not enroll their child by the stated deadline, they will be required to submit a new transfer application.



HIGH SCHOOLS (GRADES 9-12)

Student Assignment Processes and School Choice Options

Seminole County Public Schools manages a wide variety of student assignment and school choice transfer options in an effort to accommodate family choice to the maximum extent possible while also seeking to minimize overcrowded conditions, promote and maintain diverse student enrollment, support the implementation of ePathways initiatives to the maximum extent possible, and maintain compliance with any state mandates. These processes and options are outlined over the next several pages.



SCHOOL RESEARCH CHECKLIST:

Keys to making an INFORMED CHOICE

- Visit school websites
(www.scps.k12.fl.us/schools/school-listings)
- Attend a school choice event
- Contact the school
- Take a tour of the school

Quick Facts About the School:

School Name: _____

Phone Number: _____

School Hours: _____ Office Hours: _____

Transportation Available: _____ School Size: _____ Class Size: _____

Parent Teacher Association (PTA): _____ Student Advisory Council (SAC): _____

Other Volunteer Opportunities: _____

School Tour Observation Checklist:

- The classrooms look cheerful and students seem happy and engaged.
- Student work is displayed and it seems appropriate for the grade level.
- Teachers seem enthusiastic and knowledgeable.
- The principal seems confident and interested in interacting with students, teachers, and parents.
- There is a gym, field space, or athletic facility.
- There are unique, fun, and interesting learning spaces besides just regular classrooms.
- Facilities are well-maintained and the grounds are secure but inviting.

Key Questions to Ask:

- Does this school have a particular educational philosophy, mission, or theme?
- How does the school keep parents informed of school information and activities?
- How is technology used to support teaching and learning at this school?
- What extracurricular opportunities (sports, clubs, community services, competitions) are available for students?
- Does the school have a program for gifted students?
- How does this school support students who have academic, social, or emotional difficulties?
- What professional development opportunities do teachers have?
- Does the school offer physical education, art, and music classes?
- Does the school make an effort to provide activities that create a sense of community?
- What are some of the school's greatest accomplishments?

Questions for High Schools:

- What emphasis does the school place on college and career readiness?
- Are counselors available to help students make important decisions about classes and college and career readiness?

OCTOBER 1 – DECEMBER 1, 2021

On Time Application Period

There is a sibling link for incoming 9th grade students to attend the same program that his/her sibling currently attends and will continue to attend. The new student is required to submit an application during the application period. Current students do not need to re-apply.



HIGH SCHOOL MAGNETS

- Magnet Schools & Magnet Programs are high-quality and innovative educational programs that specialize in a particular theme and are open to all Seminole County students who meet the eligibility requirements.
- Transportation is provided to all students who live more than 2 miles from the school/program.
- Acceptance into a magnet school/magnet program for students applying for grade ten and above is contingent upon an administrative review of their transcripts.



ACADEMY OF HEALTH CAREERS AT SEMINOLE HIGH SCHOOL

2701 Ridgewood Ave. • Sanford, FL
407.320.5050
www.seminolehs.scps.k12.fl.us



INTERNATIONAL BACCALAUREATE DIPLOMA PROGRAM AT SEMINOLE HIGH SCHOOL

2701 Ridgewood Ave. • Sanford, FL
407-320-5050
www.seminolehs.scps.k12.fl.us



ACADEMY OF ENGINEERING AT LYMAN HIGH SCHOOL

865 South Ronald Reagan Blvd.
Longwood, FL
407-746-2050
www.lyman.scps.k12.fl.us



INTERNATIONAL BACCALAUREATE DIPLOMA PROGRAM AT WINTER SPRINGS HIGH SCHOOL

130 Tuskawilla Rd. • Winter Springs, FL
407-320-8750
www.winterspringshs.scps.k12.fl.us



CROOMS ACADEMY OF INFORMATION TECHNOLOGY

2200 West 13th St. • Sanford, FL
407-320-5750
www.cait.scps.k12.fl.us

Students applying for the IB Program zoned for Lake Brantley, Lake Mary, Lyman, & Seminole High School may only apply for Seminole High School. Students applying for the IB Program zoned for Hagerty, Lake Howell, Oviedo, & Winter Springs High School may only apply for Winter Springs High School.



Academy of Health Careers
at Seminole High School

EDUCATING THE FUTURE OF HEALTHCARE



Seminole High School is home to the Academy of Health Careers, a magnet program offering a **comprehensive academic program** with either a **patient care** focus or a **biomedical research** focus.

The rigorous academic coursework, authentic **on-site lab facilities**, off-site **clinical experiences**, and staff of licensed nurses and doctors make the Health Academy a **unique opportunity** to prepare for a career in the **healthcare industry**.



The curriculum prepares students for employment in health care through the opportunity to **earn nationally recognized industry certifications** and **dual enrollment/Career Pathways credit** at Seminole State College.

Students will earn industry certifications which will enable them to be **work-force ready** upon graduation, or give them an advantage in **pursuing higher healthcare education**.

Nationally Recognized Industry Certifications



CNA
Certified Nursing Assistant



EKG
Electrocardiograph Technician



CMAA
Certified Medical Administrative Assistant



BioTech
Biomedical Technician Assistant

2701 Ridgewood Avenue | Sanford, FL 32773 | 407-320-5050 | www.seminolehs.scps.k12.fl.us

APPLY AT WWW.SEMINOLESCHOOLCHOICESAPPLICATION.US



INNOVATING TOMORROW



Lyman Academy of Engineering is a magnet program that prepares students to be innovative and productive leaders in science, technology, engineering, and mathematics (STEM) who make meaningful contributions to our world.

Lyman Academy of Engineering offers industry certification testing for all students which can lead to additional opportunities for post-secondary employment.

Students choose to explore an area of interest including aerospace engineering, digital electronics, civil engineering and architecture, and environmental sustainability.

RENOWNED PROJECT LEAD THE WAY (PLTW) CURRICULUM EMPHASIZES CRITICAL THINKING, CREATIVITY, INNOVATION, AND REAL-WORLD PROBLEM SOLVING.

865 South Ronald Reagan Boulevard | Longwood, FL 32750 | 407-746-2050 | www.lyman.scps.k12.fl.us



Cutting Edge INNOVATION in a TECHNOLOGY RICH Environment

SPECIALIZATIONS



NETWORK SYSTEMS

- Cybersecurity
- Database Technology
- Network Administration and Support Services
- Tech Support Services



COMPUTER SCIENCE

- Computer Programming (Visual Basic, C++, Java, SQL, C#)
- Game and Simulation Programming
- UNIX/Linux



MULTIMEDIA DESIGN

- 3-D Modeling
- Business Software Applications
- Digital Video and Sound
- Game and Simulation
- Graphic Design
- Web Design



MORE THAN 20 I.T. INDUSTRY CERTIFICATIONS




STATE & NATIONAL RECOGNITION

- National Academy Foundation (NAF) Distinguished Academy
- Magnet Schools of America School of Excellence
- US News and World Report's #1 Most Connected Classrooms
- High performing "A" school on Florida's School Accountability Report



Students have the opportunity to earn an Associate of Arts degree in Information Technology, at no cost to the family, while earning their high school diploma.

2200 West 13th Street | Sanford, FL 32771 | 407-320-5750 | www.cait.scps.k12.fl.us

APPLY AT WWW.SEMINOLESCHOOLCHOICESAPPLICATION.US

EXPERIENCE WORLD CLASS LEARNING



For highly motivated, college-bound students, the **International Baccalaureate (IB) Diploma Programme** at Seminole High School offers college-level coursework that **provides a distinct competitive edge.**

The program emphasizes independent study, promotes in-depth understanding, and teaches students how to learn, analyze, and reflect on what they know.

Taught by IB trained faculty, the **international college preparatory curriculum** allows students to explore the world from a variety of perspectives.



The IB Diploma Programme has earned a reputation for rigorous assessment, helping IB diploma holders access the world's leading universities and programs.



2701 Ridgewood Avenue | Sanford, FL 32773 | 407-320-5050 | www.seminolehs.scps.k12.fl.us

APPLY AT WWW.SEMINOLESCHOOLCHOICESAPPLICATION.US



ADVENTURE AWAITS!



The **International Baccalaureate (IB) Diploma Programme** is ideal for **knowledgeable** and **caring** young people who are **motivated** to grow as individuals through significant academic challenges.

Our IB Diploma Programme has earned a rigorous reputation and is integral in helping **IB graduates access**, and find success, in the **world's leading colleges and universities**.

Our graduates attend such prestigious schools as MIT, Johns Hopkins, Vanderbilt, UF, UCF, FSU, Stetson, and Rollins.

Our **IB students** are **involved** in everything from football, theatre, and leadership to cross country and band.

With 40+ student organizations, 30+ sports, and 11+ certifications - the **sky's the limit** at Winter Springs High School.



130 Tuskawilla Road | Winter Springs, FL 32708 | 407-320-8750 | www.winterspringshs.scps.k12.fl.us

APPLY AT WWW.SEMINOLESCHOOLCHOICESAPPLICATION.US



How to Apply for a **HIGH SCHOOL MAGNET**

STEP

1

DETERMINE IF YOUR CHILD IS ELIGIBLE TO APPLY FOR A MAGNET SCHOOL.

- Even if your child is zoned to attend a high school where a magnet program exists (i.e. Academy of Engineering at Lyman High School) you **MUST** still submit a magnet application.

STEP

2

COMPLETE THE APPROPRIATE MAGNET SCHOOL APPLICATION.

- Apply online at www.seminoleschoolchoicesapplication.us.
- Students may only apply to one magnet program.

STEP

3

SUBMIT THE MAGNET SCHOOL APPLICATION VIA THE ONLINE APPLICATION SYSTEM.

- Confirmation email will be sent upon submission.
- If you do not receive a confirmation email, you did not submit the application.

STEP

4

RECEIVE A MAGNET SCHOOL NOTIFICATION EMAIL.

- On time lottery applications = school assignment email sent in mid-January each year.
- Based upon limited seat availability, even some on time applicants may receive a wait list email.
- Late applications = will be placed on the wait list for that specific program.

STEP

5

ACCEPT YOUR CHILD'S MAGNET SCHOOL ASSIGNMENT OR WAIT LIST SEAT VIA THE ONLINE APPLICATION SYSTEM.

- Log into your parent/guardian account at www.seminoleschoolchoicesapplication.us.
- Find the "magnet school applications" tab in the middle of the screen and accept your child's seat placement.

STEP

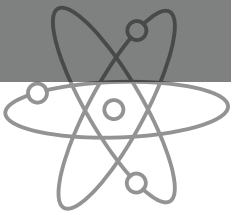
6

IF ACCEPTED INTO A MAGNET SCHOOL, FAMILIES MUST COMPLETE THE APPROPRIATE STEPS FOR ENROLLMENT.

- The school is responsible for checking all required enrollment documentation and verifying residency.
- All magnet school acceptance notifications have an enrollment deadline.
- If the parents/guardians do not enroll their child by the stated deadline, they will be required to submit a new magnet school application and their child will be placed on the wait list.

10TH, 11TH, & 12TH GRADE APPLICANTS:

Acceptance into a magnet school/magnet program is contingent upon a school based administrative review of student transcripts. However, families should still apply through the same online application system.



HIGH SCHOOL TRANSFER OPTIONS

SCPS EMPLOYEE STUDENT TRANSFER

- School choice option permitted under School Board Policy 5120 allows Seminole County Public School employees to bring their children to the site at which they work or to transfer their children to a specifically designated employee transfer school.
- Transportation is not provided.

CAPACITY TRANSFER

- School choice option permitted under School Board Policy 5120 allows students to transfer between designated Over-Capacity schools and designated Under-Capacity schools.
- Transportation is not provided.
- All available options are published annually.

DIVERSITY TRANSFER

- School choice option permitted under School Board Policy 5120 allows student transfers that bring schools closer to the average percentage of students approved for free/reduced price meal benefits at the elementary, middle, and high school levels.
- Transportation is provided to a designated school. Other school choices are without transportation.
- All available options are published annually.

ANNUALLY DEFINED TRANSFERS

- School choice options permitted under School Board Policy 5120 are designed to offer one year educational choice options for families in unique circumstances in an effort to provide educational consistency for students and families.
- Transportation is not generally provided for these options.
- Academic Year Completion Transfer
- Pending Move Transfer
- Rising 12th Grade Student Transfer
- Sibling of Exceptional Education Student Transfer

CONTROLLED OPEN ENROLLMENT

- School choice option permitted under School Board Policy 5121 which allows students the opportunity to apply to a specifically designated controlled open enrollment Seminole County Public School outside their geographic attendance zone.
- Transportation is not provided.
- All available options are published annually.

PROGRAM OF EMPHASIS

- School choice option permitted under School Board Policy 5120 allows a limited number of high school students to pursue a specific area of study that might not be available at their zoned school.
- See page 39 for additional details.



MCKAY SCHOLARSHIP

- Parent/Guardian must file an intent for a McKay Scholarship on the Florida Department of Education (DOE) website at www.floridaschoolchoice.org to determine eligibility.
- If a parent/guardian elects to use the McKay Scholarship for a public school choice option the Exceptional Student Support Services Department will ensure IEP requirements and class size restrictions are reviewed.

MAXIMIZATION TRANSFER

- School choice option permitted under School Board Policy 5120 allows students to transfer between designated Under-Capacity schools and designated greater Under-Capacity schools in order to make the most efficient use of available space and maximize school choice options for families.
- Transportation is not provided.
- All available options are published annually.



How to Apply for a **HIGH SCHOOL TRANSFER OPTION**



STEP

1

DETERMINE IF YOUR CHILD QUALIFIES FOR A PUBLISHED, ALLOWABLE TRANSFER OPTION.

- Review the Capacity, Diversity, & Maximization Chart published in February.
- Review the SCPS Employee Student Transfer Information Item published in February.
- Review the Program of Emphasis Information Item published in February.
- Review the Controlled Open Enrollment Information Item published in April.

STEP

2

COMPLETE THE APPROPRIATE TRANSFER APPLICATION.

- Apply online at www.seminoleschoolchoicesapplication.us.
- Select from the menu of allowable options for your student.
- Students may only apply for one transfer option.

STEP

3

SUBMIT THE TRANSFER APPLICATION VIA THE ONLINE APPLICATION SYSTEM.

- Confirmation email will be sent upon submission.
- If you do not receive a confirmation email, you did not submit the application.
- Please check the Student Assignment & Program Access Department website for specific application timelines.

STEP

4

RECEIVE A TRANSFER REQUEST NOTIFICATION EMAIL.

- This email notification will inform parents/guardians if the request was approved or denied.
- If request is denied there will be a reason for the denial in the email notification.

STEP

5

IF A TRANSFER REQUEST IS APPROVED, FAMILIES MUST COMPLETE THE APPROPRIATE STEPS FOR ENROLLMENT

- The school is responsible for checking all required enrollment documentation and verifying residency.
- All approved transfer notifications have an enrollment deadline.
- If the parents/guardians do not enroll their child by the stated deadline, they will be required to submit a new transfer application.







HIGH SCHOOL PROGRAMS OF EMPHASIS

**FEBRUARY 1 –
APRIL 1, 2022**

On Time Application Period

- Programs of Emphasis provide a focused area of study centered around a career pathway.
- Students who are zoned for the school may select a Program of Emphasis via course scheduling and should speak with a school counselor.
- A limited number of seats in the programs listed in this guide may be available for 9th-12th grade students who are not zoned to the school.
- Acceptance into a program of emphasis for students applying for grade ten and above is contingent upon a school based administrative review of their transcripts.

	MODELING, SIMULATION, & ANALYSIS (C)	Hagerty High School	In the Modeling, Simulation, & Analysis program students learn to navigate and create detailed models and virtual simulations. This pathway has the potential to lead to high paying careers in diverse fields related to modeling/simulation technologies and program management.
	ACADEMY OF FINANCE (C)	Lake Brantley High School	The Academy of Finance offers a curriculum comprised of finance and business technology including Accounting Applications and Personal Financial Planning.
	CREATIVE DESIGN & ENTERTAINMENT (C)	Lake Brantley High School	Students who participate in the Creative Design & Entertainment Program have the opportunity to develop their artistic and digital skill sets while preparing for a future career. Currently, the program includes the following pathways: Digital Photography Technology, 3D Animation Technology, Interior Design, and Digital Audio Production.
	CYBERSECURITY (C)	Lake Howell High School	The Cybersecurity program curriculum introduces and prepares students for careers in computer science and cyber-defense in multiple industries.
	BUSINESS & ENTREPRENEURSHIP (C/D)	Lake Howell High School	The Business & Entrepreneurship program curriculum introduces the broad spectrum of business, industry, and small business initiatives. Students will develop the fundamental knowledge and skills necessary to start and operate a business. This program includes opportunities to earn dual enrollment credit or an Associate in Arts degree in Business from Seminole State College.
	ADVANCED MANUFACTURING & INNOVATION (C)	Lake Mary High School	The Advanced Manufacturing & Innovation program provides students the opportunity to design and prototype innovative products using high-tech, industry standard equipment.
	FORENSIC SCIENCE & LEGAL STUDIES (D)	Lake Mary High School	This program includes two pathways: Forensic Science uses groundbreaking, modern scientific technology in crime scene investigation and Legal Studies teaches the foundations of our legal system.
	ACADEMY OF BUILDING AND DESIGN (C)	Lyman High School	The Academy of Building & Design provides students with the opportunity to explore careers in General Building Trades, Electrical, HVAC/Refrigeration, and Welding. Students will follow a progression of courses aligned with a chosen trade and complete industry-specific course content that will help them obtain employment in the construction industry.
	BIOSCIENCE TECHNOLOGY (C)	Oviedo High School	The Bioscience Technology program prepares students to be successful in career fields of applied biology in various industries. The courses are designed to be predominantly laboratory based with a focus on utilizing bioscience equipment and practicing lab technician skills.
	PROBLEM SOLVING INCUBATOR (C)	Seminole High School	PSI High is a project-based, full-time Program of Emphasis in which students work in a high tech school of the future designed to solve real community, business, and social problems. All students complete the Business Management and Analysis CTE program, earn multiple industry certifications in either digital design, product engineering, or computer application design, and gain direct management experience operating a School-Based Enterprise.
	AVIATION ACADEMY (C)	Seminole High School	The Aviation Academy allows access to two programs. In Aviation Maintenance students learn core flight safety and the inner workings of aircraft through maintenance coursework. The Avionics Systems program introduces students to the high-tech electronics systems aboard an aircraft. The Aviation Academy is designed to prepare students for employment or advanced training in the aviation industry.
	RENEWABLE ENERGY (D)	Winter Springs High School	The Renewable Energy program allows students to study energy technologies and the advantages, disadvantages, and limitations of renewable energy resources for a sustainable future.
	PUBLIC SERVICE ACADEMY	Winter Springs High School	The Public Service Academy exposes students to the wide variety of career opportunities in government operations and public safety. The program includes three pathway options: Principles of Teaching, Criminal Justice Operations, and Emergency Planning & Response.

C = Program Includes Industry Certification **D** = Program Includes Dual Enrollment Credits

2022-2023 CALENDAR

- Middle School Magnets/High School Magnet
- Elementary School Magnets/Elementary Region Schools
- Controlled Open Enrollment
- Elementary/Middle/High School Capacity, Diversity, Maximization, Program of Emphasis, SCPS Employee Student, McKay Scholarship, & Applicable Annually Defined Transfers

2021

OCTOBER 1	Middle School Magnet/High School Magnet Application Period OPENS
DECEMBER 1	On Time Middle School Magnet/High School Magnet Application Period CLOSES

2022

JANUARY 1	Elementary School Magnet/Elementary Region School Application Period OPENS
JANUARY 6-15	Notification Emails Sent for On Time Middle School Magnets/High School Magnets
FEBRUARY 1	Transfer Application Period OPENS
MARCH 1	On Time Elementary School Magnet/Elementary Region School Application Period CLOSES
APRIL 1	On Time Transfer Application Period CLOSES
APRIL 1	Controlled Open Enrollment Application Period OPENS
APRIL 1-10	Notification Emails Sent for On Time Elementary School Magnets/Elementary Region Schools
APRIL 15	Start Date for Notification Emails for Approved Transfer Requests
MAY 1	Controlled Open Enrollment Application Period CLOSES
MAY 13	Start Date for Notification Emails for Approved Controlled Open Enrollment Requests
JULY 20	Deadline for 1st Semester Transfer Requests
DECEMBER 1	Deadline for 2nd Semester Transfer Requests

Except for Controlled Open Enrollment, applications may continue to be submitted after the on time application timelines. Depending upon the type of request and the available capacity at the requested school, a late applicant may be placed into a program/school, wait listed, approved, or denied. Elementary region school zone assignments are ongoing and families new to those school zones must still be assigned through the Student Assignment & Program Access Department during the current school year.

STUDENT ASSIGNMENT & PROGRAM ACCESS DEPARTMENT

FREQUENTLY ASKED QUESTIONS



HOW DO WE APPLY?

Applications are done via an online application system. Visit www.seminoleschoolchoicesapplication.us to apply.

HOW DO I KNOW IF MY APPLICATION HAS BEEN RECEIVED?

You will receive a confirmation email that your application has been received. Families may also click on the **"My Messages"** portion of their online application account to read communications about the applications that have been submitted.

WHO DO I CONTACT FOR TRANSPORTATION QUESTIONS?

- Transportation is provided to all students attending their zoned school (based upon address) who live more than two miles from their zoned school. This two mile criteria also applies to any family who lives in an elementary region school zone. Transportation routes are developed at the end of July for the upcoming school year starting in August. Families with transportation questions should contact the Transportation Department directly.
- Bus Stop Information: 407.320.7588
- Main Office Winter Springs: 407.320.7550
- Main Office Midway: 407.320.2550
- General Email: Transportation@scps.k12.fl.us

WHAT DO THE ABBREVIATIONS ESOL AND IEP STAND FOR ON THE APPLICATION?

- ESOL = English Speakers of Other Languages
- IEP = Individual Education Plan for special education services

HOW DO I KNOW IF MY CHILD IS APPROVED TO ATTEND THE SCHOOL/ PROGRAM WE APPLIED FOR?

You will receive application notifications via email. Those same emails may also be viewed by utilizing the **"My Messages"** feature within your online application account.

IF I HAVE MULTIPLE CHILDREN, DO I NEED MULTIPLE APPLICATION ACCOUNTS?

No, only one account is needed for all students and all applications for all school years. There will never be a need to create a second account. Creating multiple application accounts can potentially cause application issues and delays.

DO I NEED TO SUBMIT A SEPARATE APPLICATION FOR EACH STUDENT?

Yes, separate applications must be submitted for each student for each application process. If you want multiple students to attend a certain school or program, you would need to submit separate applications for each student.



ONLINE APPLICATION SETUP

Only one account is needed for all students and all applications for all school years. There will never be a need to create a second account. Using the parent dashboard, your online account will allow you to track the status of an application and read critical notifications about an application.



TO APPLY FOR A SCHOOL CHOICE OPTION THROUGH THE ONLINE APPLICATION SYSTEM:

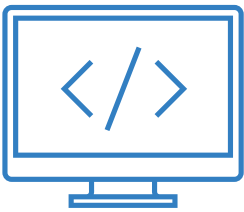
- 1 Go to **www.seminoleschoolchoicesapplication.us** on your computer, tablet, or smartphone.
- 2 Create your Parent/Guardian Account with an email address and password that is easy to remember.
- 3 Click on **"Create Account"** to create your online account and login for the first time.

YOU WILL RECEIVE NOTIFICATION EMAILS FOR THE FOLLOWING REASONS:

- Your application has been received.
- Your application has been processed and is eligible/ineligible for consideration.
- The results of the random selection process (if applicable).
 - Offered a seat in a program.
 - Placed on the wait list for that program.

Additional emails may be sent to communicate missing pieces of information from an application or to address issues on an application that is deemed ineligible. Check your email and the user dashboard on your recently created Parent/Guardian Account frequently for updates during the application process.

***Please Note:** If you reach the **"Confirmation"** page of the application you must still click on the **"Send My Application"** button in order to submit your application. If you do not click on that button the application will not officially be submitted.



ONLINE APPLICATION STATUS CHECK

To check the status of an application that was submitted via the online application system:

- 1 Go to **www.seminoleschoolchoicesapplication.us** on your computer, tablet, or smartphone.
- 2 Enter your user ID (email address) and password.
- 3 Click on **"Login"** to sign back into the Parent/Guardian Account that was previously created.
- 4 Once logged in, click on **"Dashboard"** in the upper left corner of the screen next to your name.
- 5 From this dashboard, look to the middle of the screen to then check the status of the appropriate:
 - a. Magnet School Application
 - b. Region School Application
 - c. Transfer Application

From this dashboard you may also do the following:

- Click on **"My Messages"** to read previous communications regarding your application account.
- Click on **"Select Language"** to view the application site in a different language.
- Submit additional school choice applications by school year.

GENERAL SCHOOL ZONE INFORMATION

WHAT IF I WANT MY CHILD TO ATTEND HIS/HER ZONED SCHOOL BASED UPON OUR ADDRESS?

All families are zoned to an elementary school (Kindergarten – 5th grade), middle school (6th grade – 8th grade), and high school (9th grade – 12th grade) based upon their address.

All residential addresses will be zoned to one elementary school, one middle school, and one high school **except for those addresses which are zoned to an elementary region school zone. Those addresses are zoned for any one of three elementary schools**, one middle school, and one high school.

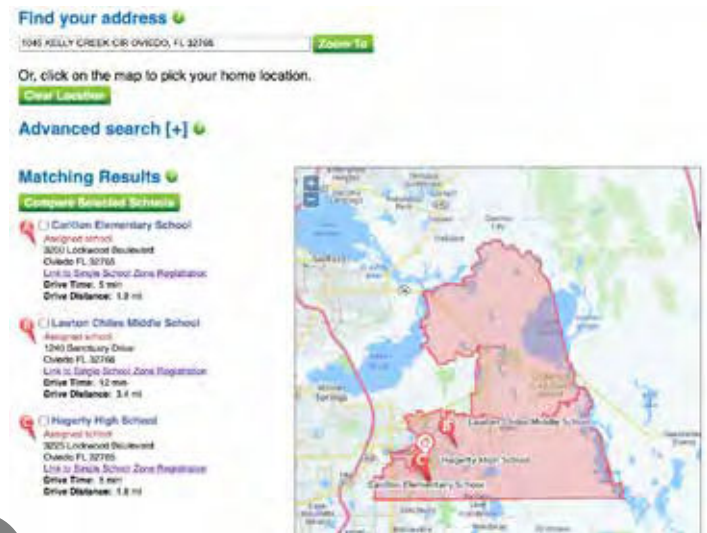
Families should visit the Enrolling Your Student webpage to review all essential information regarding the enrollment process (required documentation, records, etc.) at www.scps.k12.fl.us/parents/enrolling-your-student/

Check Your School Zone at www.scps.k12.fl.us/schools/find/index.stml

SINGLE SCHOOL ZONE ADDRESSES

The majority of SCPS school zones are single schools/single school zones.

Families zoned to single schools/single school zones should contact the front office of those specific schools for enrollment assistance.

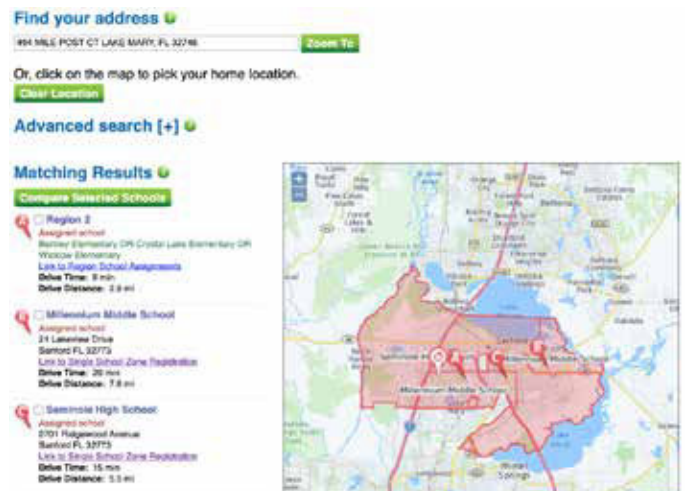


VS

ELEMENTARY REGION SCHOOL ZONE ADDRESSES

Families zoned to an elementary region school zone should submit a region school zone application online at www.seminoleschoolchoicesapplication.us to begin the school assignment process that must take place prior to actual enrollment at a school site.

Region 1	Region 2	Region 3
<p>Bentley Elementary</p> <p>Idyllwilde Elementary <i>Future Ready Academy</i></p> <p>Wilson Elementary</p>	<p>Bentley Elementary</p> <p>Crystal Lake Elementary</p> <p>Wicklow Elementary <i>Magnet School for Global Pathways</i></p>	<p>Hamilton Elementary <i>School of Engineering & Technology</i></p> <p>Midway Elementary <i>School of the Arts</i></p> <p>Pine Crest Elementary <i>Magnet School of Innovation</i></p>



Middle School & High School enrollment for these addresses will follow the single school/single school zone enrollment process.

INTERESTED IN A VIRTUAL OPTION?

DIVE INTO ADVENTURE!



- Seminole County Virtual School is run by your local, A-rated school district.
- High-quality education along with flexible options to meet the demanding schedule of the 21st-century student.
- Full-time option allows students to earn a regular Florida high school diploma.
- Course offerings include core academics and a variety of electives to keep your student engaged.
- Program of Emphasis in Hospitality and Tourism Management.
- Opportunities for acceleration or remediation.

450 Technology Park | Lake Mary, FL 32746 | 407-871-7287 | www.scvs.us



Seminole County Public Schools manages a wide variety of student assignment and school choice transfer options in an effort to accommodate family choice to the maximum extent possible while also seeking to minimize overcrowded conditions, promote and maintain diverse student enrollment, support the implementation of ePathways initiatives to the maximum extent possible, and maintain compliance with any state mandates.

These processes and options are guided by School Board policy.

- Policy 5120: SCHOOL STUDENT ATTENDANCE ZONES AND INTERZONE TRANSFERS
- Policy 5121: CONTROLLED OPEN ENROLLMENT

To view comprehensive School Board policy information, please visit <https://go.boarddocs.com/fl/semi/Board.nsf/Public>

REASONABLE ACCOMMODATION(S)

Seminole County Public Schools (SCPS) is committed to serving those that have a disability that may require reasonable accommodation(s). The SCPS Equity and ADA Administrator is available to assist at (407) 320-0148. Qualified applicants are entitled to reasonable accommodation(s) during the application and interview process. Applicants requesting an accommodation may call (407) 320-0231.

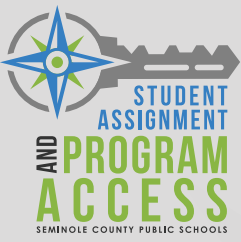
EDUCATIONAL EQUITY – NOTICE OF NONDISCRIMINATION

The Educational Equity Administrator for Seminole County Public Schools has the responsibility of assuring compliance with the educational equity requirements by providing technical expertise, monitoring activities or programs related to compliance, and responding to equity complaints. One of the responsibilities is to administer the Educational Equity Complaint/Grievance Procedures as adopted by the School Board.

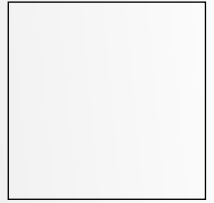
It is the policy of the School Board of Seminole County, Florida, that no employee, student, or applicant shall be excluded from participating in, be denied the benefits of, or be subjected to discrimination and/or harassment under any educational programs, activities, or in any employment conditions, policies, or practices conducted by the District. The School Board does not discriminate on the basis of

race, color, national origin, sex (including sexual orientation, transgender status, or gender identity), disability (including HIV, AIDS, or sickle cell trait), pregnancy, marital status, age, religion, ancestry, or genetic information which are classes protected by State and/or Federal law in its programs and activities, including employment opportunities. Additionally, the School board of Seminole County provides equal access to public school facilities for the Boy Scouts of America and other designated youth groups as required by 34 C.F.R. 108.6.

Every employee, student, or applicant for employment at Seminole County Public Schools has a solemn right to be treated fairly, equally, equitably, and with dignity. If for any reason you - the employee, student, or applicant for employment - find that you have been victimized by acts of discrimination and or harassment, whether intentional or unintentional, you are strongly encouraged to file an Educational Equity Complaint or Grievance with the Educational Equity Administrator, or any county or school-level administrator. All such complaints must be immediately forwarded to the Educational Equity Administrator for dissemination, action, and resolution. Forward to: SCPS Educational Equity Administrator, Seminole County Public Schools, Educational Support Center, 400 E. Lake Mary Blvd., Sanford, FL 32773-7127. 407.320.0148.



Educational Support Center
400 East Lake Mary Boulevard
Sanford, FL 32773



2022-2023

FOR MORE INFORMATION CONTACT

Student Assignment and
Program Access Department

Educational Support Center
400 East Lake Mary Boulevard
Sanford, FL 32773

407-320-0329

www.seminoleschoolchoices.us



facebook.com/SCPSAssignmentandAccess/



APPLY ONLINE AT WWW.SEMINOLESCHOOLCHOICESAPPLICATION.US